
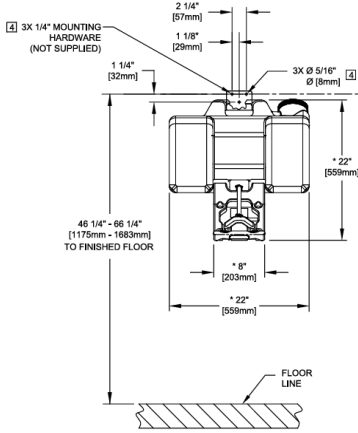
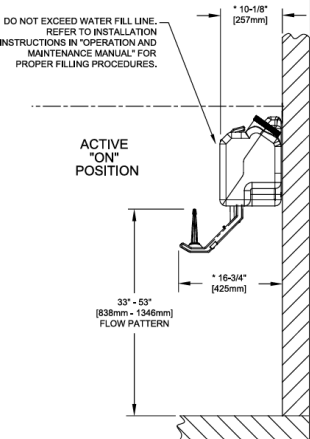




PROJECT		REF		REV	ITEM CODE	
LOCATION		DATE			PAGE	

SANITARY WARE SPECIFICATION SHEET

<p>Item Descriptions</p> <p>Model</p> <p>Dimensions</p> <p>Material</p> <p>Manufacturer</p> <p>Source</p> <p>Contact Tel/Fax</p> <p>E-mail</p> <p>Website</p>	<p>Haws (USA) Emergency eye wash compact portable gravity operated eyewash shall include a FDA approved high-density green polyethylene 9 gallon (34.1 L) tank, ABS plastic eyewash heads with .4 gpm (1.5 L) flow rate over 15 minutes, yellow pull-down activation arm, integral handle</p> <p>7501</p> <p>Refer to drawing</p> <p>Plastic</p> <p>Haws Corporation (USA)</p> <p>Ka Shing Enterprises (H.K) Limited Mr. Ivan Lau / Mr. GilmanYuen (852) 2628-0661 / (852) 2490-2700 project@kashingehk.com www.kashingehk.com</p>	<p>Illustration/ Drawing</p>   
<p>Portable Gravity Fed Eyewash</p> <p>The newly retooled Haws 7501 compact portable eyewash is a 9-gallon (34.1 L) capacity gravity operated portable eyewash that supplies a continuous flow of water for a full 15 minutes at .4 gpm. This unit is a cost-effective solution ideal for locations without access to potable water, including temporary decontamination sites, temporary treatment facilities, and short-term job sites. Product enhancements include:</p> <ul style="list-style-type: none"> *Featuring a FDA approved high-density green polyethylene tank that is easily activated by pulling the yellow activation arm down to the open position *A wide-fill opening with a securely threaded cap, and a pronounced 'Max Fill' line permits easy inspection, cleaning and filling *Relocation is simple due to 'Lift Here' graphics, easily mounted bracket (included) and light design of this 9-gallon (34.1 L) portable *Measurements: 14-1/2" high, 22" wide, 10-1/8" (36.8 x 55.9 x 25.7 cm) deep. *Note: Unit must be wall hung <p>Certified by CSA to meet the ANSI/ISEA Z358.1 Standard for Emergency Eyewash and Shower Equipment. This is clearly called out on the exterior of the unit.</p> <p>Prop 65 Warning. For California Residents Warning: This product contains a chemical known to the State of California to cause cancer and/or birth defects or other reproductive harm. Please click here for more information.</p>		

Note:

* All information of the above is for the reference only. No prior notice is made if any changes.

AGENDA

- HAWSCLEAN™ CLEANSING STICK
 - Product Overview
 - Features & Benefits
 - How it works
 - Retrofit Capabilities
 - Cost Savings
 - Other Methods
- Portable Eyewash Offerings
 - Haws Portable Eyewashes
 - ANSI Requirements



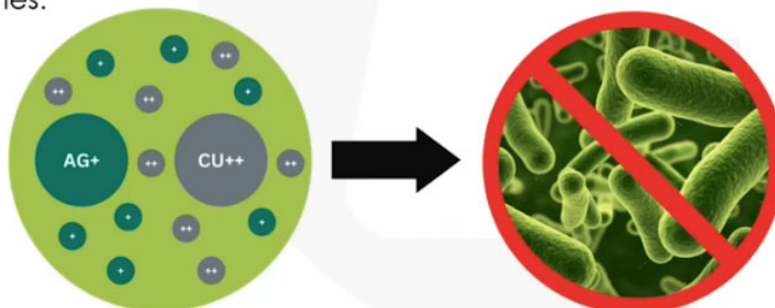
PRODUCT OVERVIEW

- Safe and effective way to prevent the growth of Legionella, E-Coli, and other harmful bacteria in your portable emergency eyewash equipment.
- Reduces the cost and resources associated with portable, self-contained eyewash maintenance.



WHAT IS COPPER-SILVER IONIZATION TECHNOLOGY?

- It uses an advanced noble metal technology (active ceramics + copper-silver ionization) to provide constant protection against the growth of pathogenic bacteria, including Legionella.
- It is globally recognized as a safe and effective method of cleansing water across many industries.



FEATURES & BENEFITS

- **Three years of protection** against the growth of algae, fungi, Legionella, E-Coli, and other pathogenic bacteria
- **Service once annually** to ensure ANSI/ISEA Z358.1-2014 compliance
 - One stick cleanses up to 60 liters (16 gallons). Can use 2 sticks to preserve between 61 to 120 liters (16 – 32 gallons).
- **Long shelf life** so long as the external plastic package has not been compromised the product can sit for up to 3-years.
- Easy to install and use
- No power required
- Environmentally friendly / recyclable

- Eyewashes must deliver minimum of 0.4 gallons (1.5 L) per minute of water for 15 minutes. (Sec 5.1.6)
- Go from "off" to "on" in one second or less and remain on without use of operator's hands. (Sec. 5.2)
- Flow pattern should be 33 to 53 inches from the surface floor of user. (Sec. 5.4.4)
- Must provide non-injurious, controlled flow to both eyes simultaneously. (Sec. 5.1.11)
- Outlets shall be protected from airborne contaminants. (Sec. 5.1.3)
- Deliver tepid flushing fluid between 60 and 100° F (Sec. 5.4.6)



Self-Contained Eyewash Units

Also known as portable eyewash units, contain a large volume reservoir of flushing fluid within to provide a continuous 15-minute flow in the event of an emergency.



Portable

Ideal for locations without access to potable water or for locations where eyewash access needs to be moved at a moments notice.



ANSI Compliant

Haws® portable eyewash units meet all ANSI requirements for flow rates, stream heights, and pressure for the full flushing duration and are CSA certified to ANSI/ISEA Z358.1-2014.

PORTABLE EYEWASH

PRESSURIZED



FEATURES & BENEFITS

CONSTRUCTION

FDA approved high-density green polyethylene tank provides the light and durable construction required in a portable unit.

MOUNTING

J-shaped stainless steel wall bracket makes for a well constructed portable mount for easy removal and re-mount.

FLOW CONTROLS

Pulling down the eyewash arm will begin flushing the 9-gallon (34.1 L) portable tank at .4 gpm (1.5 L) for a full 15 minutes, creating a full patterned flushing of the eyes.

DESIGN

Tank comes complete with a wide-fill opening and threaded cap for quick inspection, cleaning, and filling. Unit also comes equipped with top and side handles making relocation easy.



OPTIONS

- Waste Container: Model 9009 is a twenty-gallon (75.7 L) wastewater container constructed of tough yellow polymer resin. Unit is used to collect water during weekly testing of emergency equipment.
- HawsCLEAN™ Portable Eyewash Cleansing Stick: Model 9083, HawsCLEAN cleansing stick for gravity fed and pressurized portable eyewash equipment.
- Water Additive: Model 9082, bacteriostatic preservative for use in portable eyewash stations. One 8 oz. (236 ml) bottle will preserve 5 to 20 gallons (18.9 to 75.7 L) of potable water for up to four months. Four bottles per carton.

For more information, visit www.hawsco.com or call (888) 640-4297.

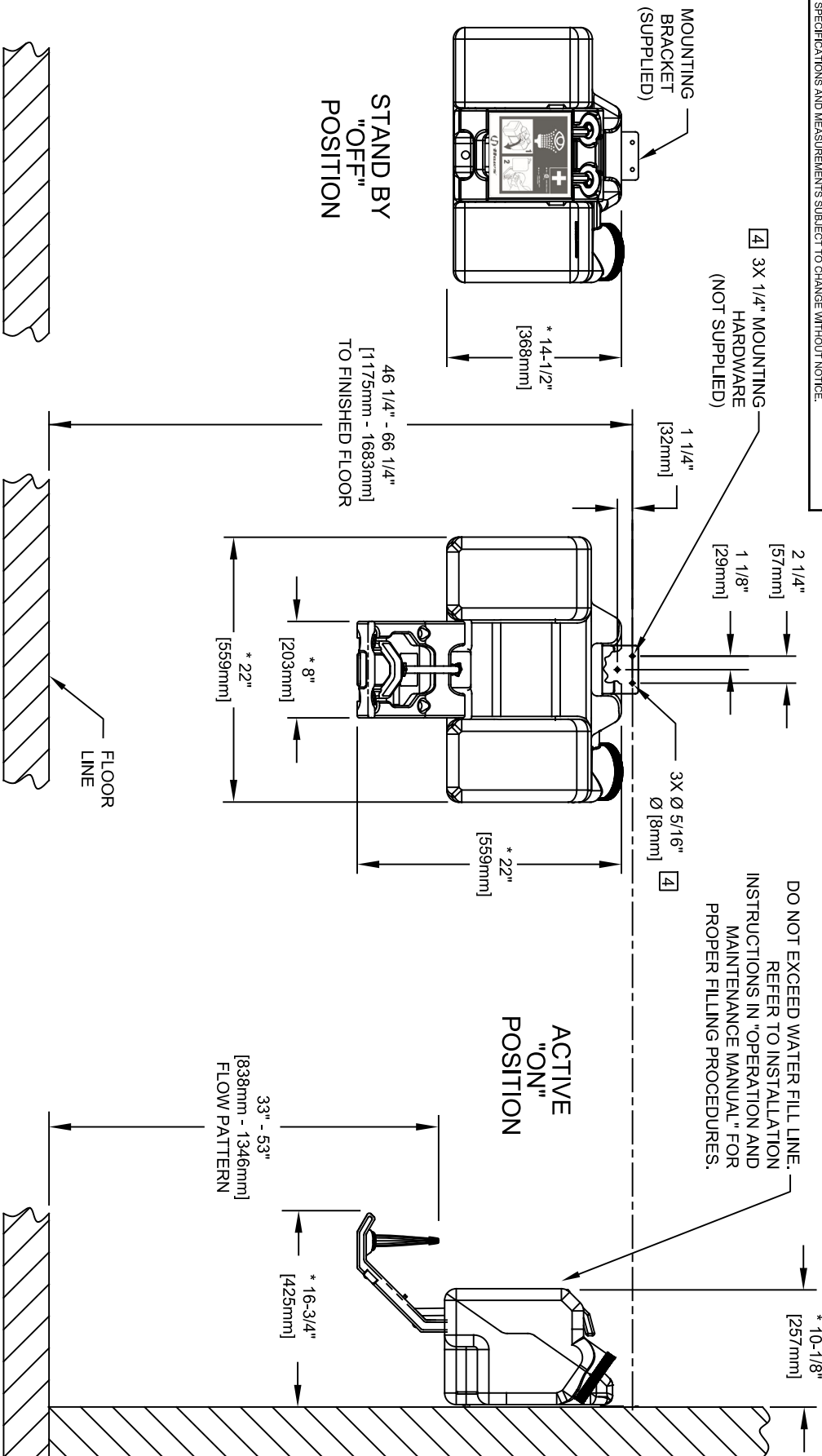
SPECIFICATIONS

Model 7501 compact portable gravity operated eyewash shall include a FDA approved high-density green polyethylene 9 gallon (34.1 L) tank, ABS plastic eyewash heads with .4 gpm (1.5 L) flow rate over 15 minutes, yellow pull-down activation arm, integral handle with “lift here” graphics on top, clearly visible fill line, wide-fill threaded cap, sign-mounted operating instructions, and stainless steel wall bracket (unit must be hung). Additive not included – Order separately.

APPLICATIONS

Where the eyes of any person may be exposed to injurious or corrosive materials, when suitable facilities for quick flushing of the eyes needs to be provided and a continuous supply of water is not available. Although the 7501 may be installed in a wide variety of locations, it is ideal for remote areas where protective measures are still needed. Emergency eyewash equipment shall be in unobstructed and accessible locations that require no more than 10 seconds for the injured person to reach. Model 7501 is certified by CSA to meet the ANSI/ISEA Z358.1 Standard for Emergency Eyewash and Shower Equipment.





NOTES:

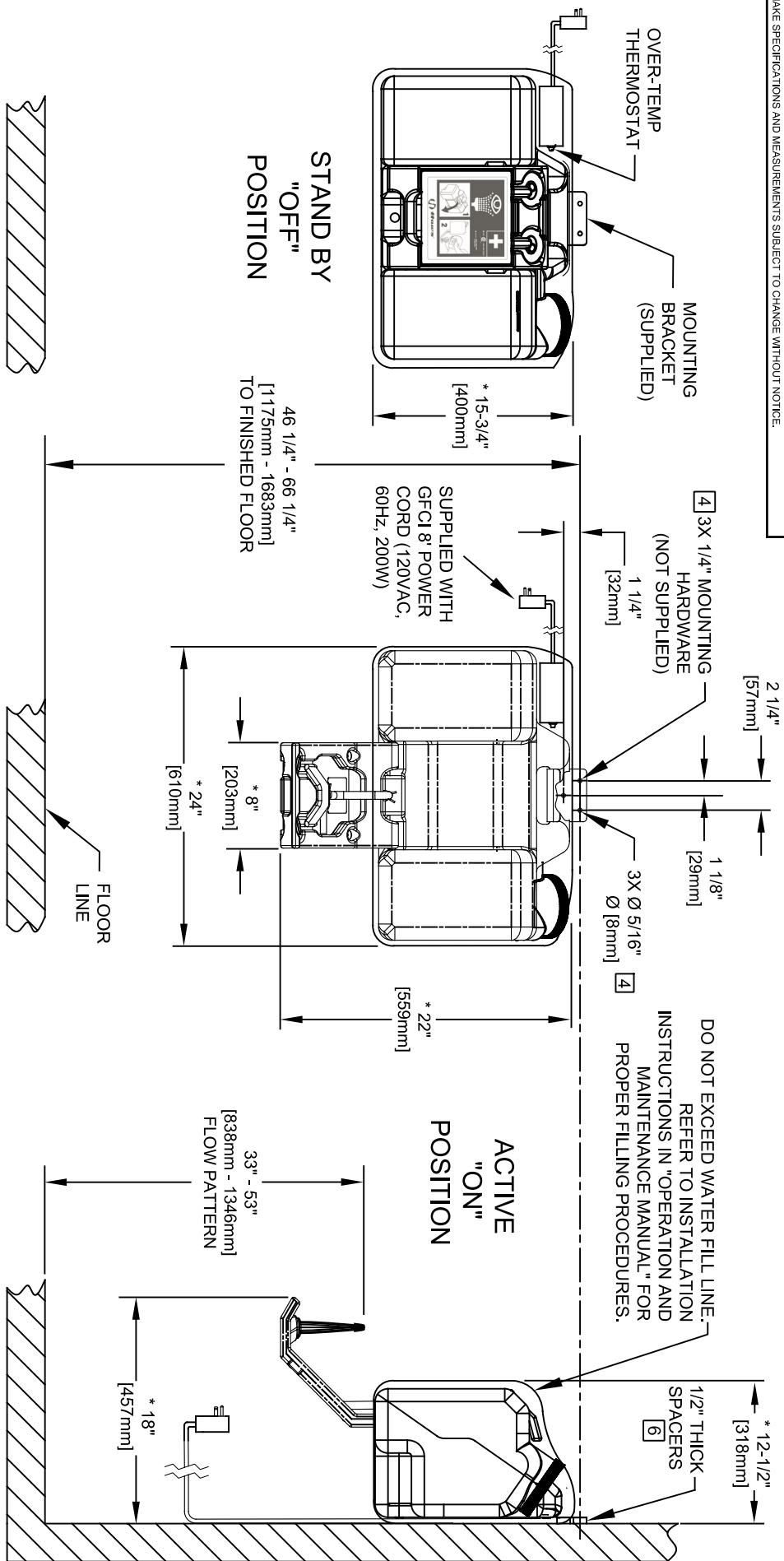
1. WHEN INSTALLING THIS UNIT, LOCAL, STATE, OR FEDERAL CODES SHOULD BE ADHERED TO FOR INSTALLATION DIMENSIONS (LOCATIONS), WASTE AND SUPPLY REQUIREMENTS, ETC.
2. TO COMPLY WITH ANSI Z358.1-2014 FOR EMERGENCY EYEWASH OR EYE/FACE WASH: EYEWASH OR EYE/FACE WASH SHALL BE POSITIONED SUCH THAT FLUSHING FLUID PATTERN IS NOT LESS THAN 33" (838mm) AND NO GREATER THAN 53" (1346 mm) FROM SURFACE ON WHICH USER STANDS; AND 6.0" (153mm) MINIMUM FROM WALL OR NEAREST OBSTRUCTION.
3. UNIT MUST BE LEVEL FROM FRONT TO BACK AND SIDE TO SIDE.
4. ALL THREE MOUNTING HOLES ON MOUNTING-BRACKET MUST BE USED TO PROPERLY SECURE EYEWASH UNIT TO WALL.

5. DIMENSIONS MAY VARY ±1/2" [12.7 mm]
6. LOCATE ONE 1/2" THICK SPACER (QTY. 3 SUPPLIED) BEHIND EACH HOLE IN THE MOUNTING BRACKET AS SHOWN. (MODEL 7501T & 7501T240 ONLY)
7. UNIT MUST BE FILLED WITH WATER BEFORE CONNECTING TO POWER SOURCE.
8. MODEL 7501T MUST HAVE A GROUND FAULT PROTECTION DEVICE (30ma GFEDP) FOR HEAT TRACE. ELECTRICAL CURRENTS MAY BE INSUFFICIENT TO TRIP A CONVENTIONAL CIRCUIT BREAKER. ALL INSTALLATIONS MUST BE INSTALLED IN COMPLIANCE WITH LOCAL, STATE, AND/OR FEDERAL CODES.

MODEL 7501

FOR MODEL 7501T, SEE SHEET 2 OF 2

		1455 KLEPPLE LANE	
SPARKS, NEVADA 89431		(775) 359-4712 FAX (775) 359-1424	
E-MAIL: HAWS@HAWS.CO.COM		WEBSITE: WWW.HAWS.CO.COM	
ECON. REVISED PER BY: JL		MODEL(S)	
DRAWN: ECON. 6/06		7501/7501T	
DATE: 06/30/16		SCALE: 1:1	
CHK'D: JL		DRAWING TYPE:	
APPROVED: FV		DATE: 09/22/24	
DATE: 09/22/24		INSTALLATION:	
SIZE: A1		SHEET: 1 OF 2	
PART NUMBER: 0002080045.D		REVISION: 19	



MUST USE WITH NEMA/TYPE 3R CERTIFIED COVERED OUTLET (NOT SUPPLIED).

MODEL 7501T

FOR MODEL 7501, SEE SHEET 1 OF 2

1455 KLEPPLE PLANE
SPARKS, NEVADA 89431
(775) 359-4712 FAX (775) 359-7424
E-MAIL: HAWS@HAWSCO.COM
WEBSITE: WWW.HAWSCO.COM

EGN NO.	REVISED PER BY:	JL	MODEL(S)	7501/7501T
5096	EGN: 6006	CHK'D:	SCALE:	1:1
DATE:	06/30/16	JL	DRAWING TYPE:	INSTALLATION
APPROVED:	DATE:	06/22/24	SIZE:	A1 SHEET 2 OF 2
REV:				19

PART NUMBER: 0002080045.D