



PROJECT		REF		REV	ITEM CODE	
LOCATION		DATE			PAGE	

SANITARY WARE SPECIFICATION SHEET

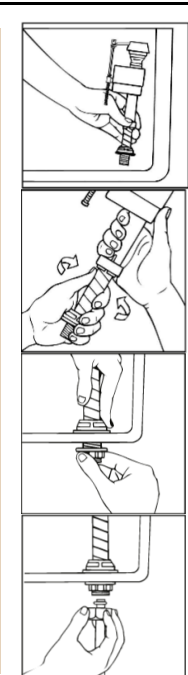
Item Descriptions	FLUIDMASTER (USA) " 400A " 5/8" bottom entry extractable and quiet float valve
Dimensions	Height: 229~356 mm
Model	400A
Manufacturer	Fluidmaster Inc
Source	Ka Shing Enterprises (H.K) Limited Mr. Ivan Lau / Mr. GilmanYuen
Contact Tel/Fax	(852) 2628-0661 / (852) 2490-2700
E-mail	project@kashinghk.com
Website	www.kashinghk.com



Fluidmaster's 400A toilet fill valve is the #1 best selling fill valve in the world! This is an anti-siphon design-fill valve with adjustable height from 9" to 14". Replace your old style ballcock valve with this better performing Fluidmaster toilet fill valve. Fluidmaster invented the fill valve technology in 1958.

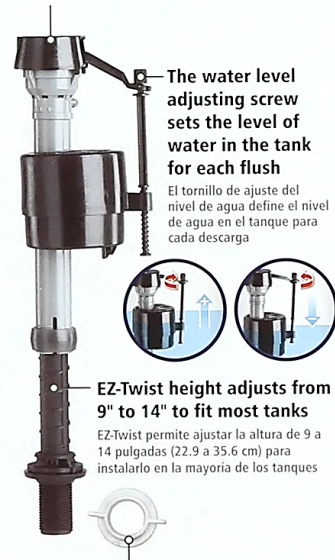
For best performance of your toilet, consider replacing the flapper along with the fill valve. To choose the right flapper, please view them at [Fluidmaster Toilet Flappers](#).

- Replaces ballcocks
- Easy to install
- Height adjusts 9"-14"
- Refills quickly
- Universal fit for 1 and 2 piece toilets
- Corrosion-resistant material
- Anti-siphon operation, code approved
- Won't contaminate fresh water supply



Anti-siphon design complies with all plumbing codes

El diseño antisifón cumple con todos los códigos de plomería



The water level adjusting screw sets the level of water in the tank for each flush

El tornillo de ajuste del nivel de agua define el nivel de agua en el tanque para cada descarga



EZ-Twist height adjusts from 9" to 14" to fit most tanks
EZ-Twist permite ajustar la altura de 9 a 14 pulgadas (22.9 a 35.6 cm) para instalarlo en la mayoría de los tanques

Torque Guard™ locknut prevents thread damage from over tightening

La contratuerca Torque Guard™ previene daños a la rosca causados por apretar en exceso

Note:

* All information of the above is for the reference only. No prior notice is made if any changes.