
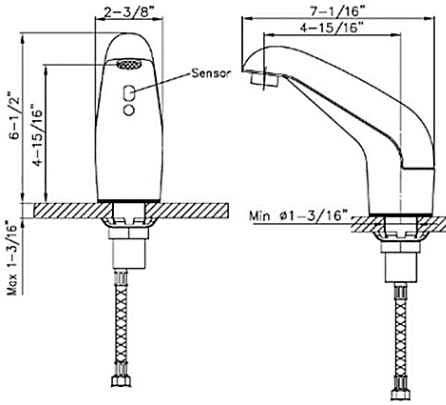
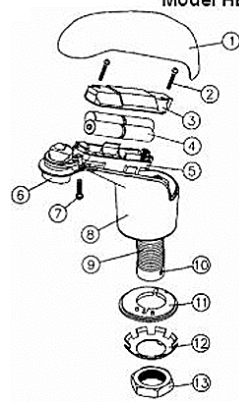




PROJECT		REF		REV	ITEM CODE	
LOCATION		DATE			PAGE	

SANITARY WARE SPECIFICATION SHEET

<p>Item Descriptions</p> <p>Model</p> <p>Dimensions</p> <p>Finish</p> <p>Manufacturer</p> <p>Source</p> <p>Contact Tel/Fax</p> <p>E-mail</p> <p>Website</p>	<p>Hydrotek (USA) Chrome plated brass handwashing sensor faucet for cold water; operated in DC Supply; top access replacement of batteries; 0.5 GPM vandal resistant aerator</p> <p>HB-5000E</p> <p>L125 x W60 x H165 mm</p> <p>Chrome Plated</p> <p>Taiwan</p> <p>Ka Shing Enterprises (H.K) Limited Mr. Ivan Lau / Mr. GilmanYuen</p> <p>(852) 2628-0661 / (852) 2490-2700 kashing.project@gmail.com www.kashingehk.com</p> <p>Product Details The 5000E Series faucet is an elegant piston operated sensory faucet that provides a vandal resistant, no touch lavatory solution that promotes better hygiene and energy savings. Designed to be easy to install and maintain, all major faucet components are encased above deck, making for easier access. The sensor included in this faucet is self adapting, meaning manual adjustments are not necessary and the innovative sensor placement eliminates ambient reflectivity issues.</p> <ul style="list-style-type: none"> ● Auto,time-out: - 60 seconds ● Sensor range: - Self adapting ● Shut-off delay: - 1 second ● Battery powered models: - (4) AA Alkaline batteries ● Battery service life: - 400,000 on/off cycles, up to 4 years <p>HB-5000E Battery Powered, non-mixing, Automatic Faucet:</p> <p>Single-hole deck mount, non-mixing, automatic, lavatory faucet with chrome plated, solid, all metal construction. Includes faucet, sensor assembly, 6V DC slow-closing solenoid valve, one (1) 3/8" braided S.S.supply line, one (1) in-line filter, 0.5 GPM vandal resistant aerator, four (AA) Alkaline Batteries and all necessary faucet mounting hardware. All major faucet components (sensor, battery holder, control module PCB and solenoid valve) are housed in an innovative, vandal resistant, clam-shell designed faucet body for easy installation and quick above the deck access. Unique mounting of self-adapting sensor resolves all potential reflectivity issues.</p>	<p style="text-align: center;">Illustration/ Drawing</p> <div style="text-align: center;">  </div> <div style="text-align: center;">  </div> <div style="text-align: center;"> <p>Model HB-5000E</p>  </div>
--	---	--

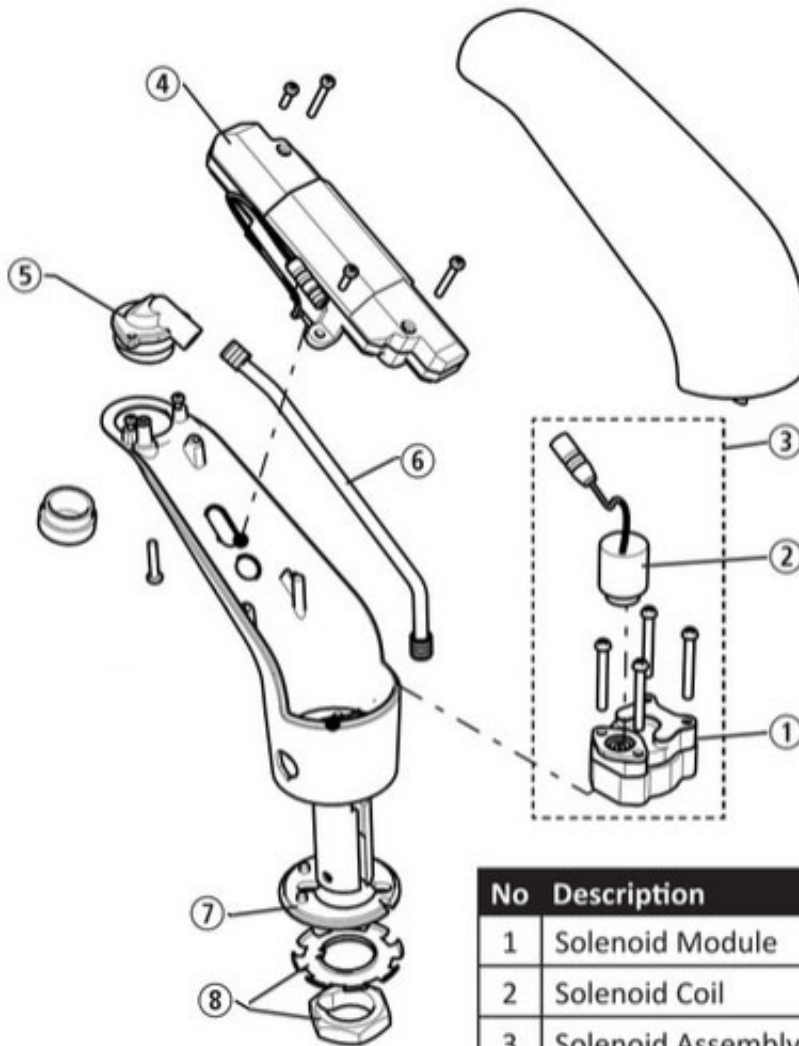
Note:

** All information of the above is for the reference only. No prior notice is made if any changes.*



PROJECT		REF		REV	ITEM CODE	
LOCATION		DATE			PAGE	

SANITARY WARE SPECIFICATION SHEET



No	Description	Part Number
1	Solenoid Module	HCE-004
2	Solenoid Coil	HCE-019
3	Solenoid Assembly	HCE-194
4	Control Module Assembly	HCE-018A (AC) HCE-018B (DC)
5	Aerator Connector	HCE-006
6	Copper Supply Tube	HCE-016
7	Rubber Gasket	HCE-022
8	Mounting Nut & Washer	HCE-021

Note:

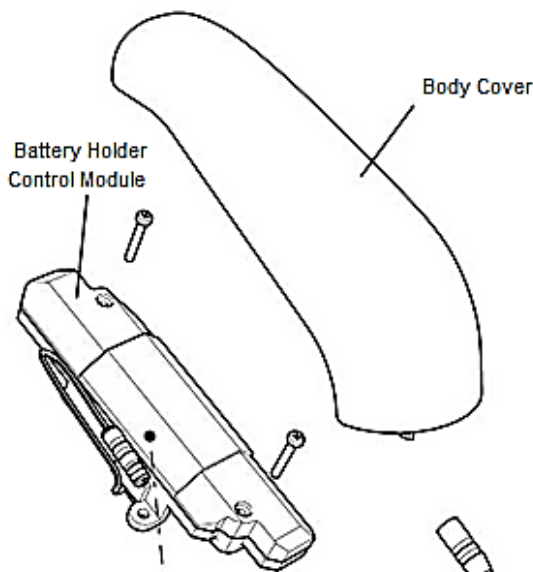
* All information of the above is for the reference only. No prior notice is made if any changes.



PROJECT		REF		REV	ITEM CODE	
LOCATION		DATE			PAGE	

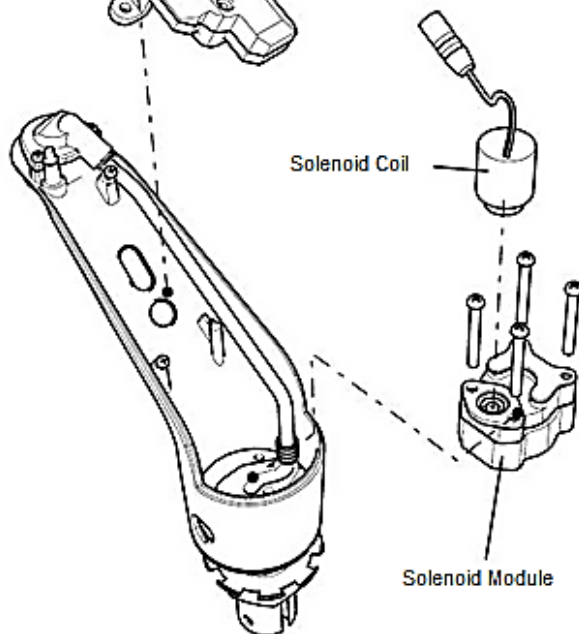
SANITARY WARE SPECIFICATION SHEET

HCE-194 Solenoid Valve Assembly Replacement



1. Remove faucet Body Cover.
2. Remove batteries (battery powered faucets) or unplug power adapter (AC powered faucets).
3. Loosen and remove the Battery Holder/Control Module, making sure to disconnect all connectors.
4. Unscrew and remove the Solenoid Coil from the Solenoid Valve Module.
5. Completely loosen the four screws securing the Solenoid Valve Module. List the Solenoid Valve Module from the faucet.
6. Install the new Solenoid Valve Module and reassemble the faucet in reverse order. *NOTE: When installing the Solenoid Coil to the Solenoid Valve Module, DO NOT over-tighten. Fit should be snug.*

CONTROL MODULE (P.C. BOARD) REPLACEMENT



1. Remove faucet Body Cover.
2. Remove batteries (battery powered faucets) or unplug power adapter (AC powered faucets).
3. Unplug the Battery Holder/Control Module connector.
4. Loosen the two screws holding the Battery Holder/Control Module and remove it.
5. Install the new Battery Holder/Control Module ensuring the sensor eye is fitted correctly to the faucet body.

Note:

* All information of the above is for the reference only. No prior notice is made if any changes.



水務署
Water Supplies Department

總部 Headquarters

香港灣仔告士打道七號入境事務大樓 48 樓

48/F, Immigration Tower, 7 Gloucester Road, Wan Chai, Hong Kong

本署檔號 : (4) in WSD 3321/2020 T/J(1594/2020)
Our ref.
來函檔號 :
Your ref.

電話 :
Tel.
傳真 : 2824 0578
Fax.

21 January 2021

**Approval of "HYDROTEK" Sensor Taps
(General Acceptance No. C20210049)**

Your letters ref. 490/20 and 555/20 dated 4 December 2020 and 4 January 2021 respectively refer.

Having considered the test report ref. RHCF025 issued on 2 December 2020 by Ideal Test Consultants Ltd., this Authority accepts that the fittings described below comply with, and their use when correctly installed does not contravene, the Waterworks Ordinance and Regulations.

Name of Manufacturer: Hydrotek Corporation

Country of Origin: Taiwan, China

Brand: Hydrotek

Details of Fitting: 3/8" Deck mounted sensor tap

Model: HB-5000E and H-5000E

Body Markings: **Hydrotek**

Expiry Date: 11 November 2025



This Authority hereby permits the use of the above fittings in fresh water plumbing systems subject to full adherence to Waterworks installation requirements. In particular, you are required to draw your customers' attention to the following requirement-

"A stop cock or gate valve must be installed at the upstream of the fittings for manual isolation of water supply." AND

"The main voltage operated sensor valve should comply with the electricity safety regulation for applications in bathroom, toilet etc."

A condition of this acceptance is that the fittings to be installed shall be replicas of the samples as certified by the testing agent mentioned above and without modifications. This acceptance may be withdrawn at any time if the standard of the fittings installed fails to meet that of the approved samples or if the fittings are found to be unsuitable for use in fresh water plumbing systems.

This acceptance is only applicable to the main body of the fittings, unless otherwise specified.

For the use of the fittings in any project, the General Acceptance Number of this letter must be quoted as a means of identification of acceptance of the fittings by this Authority.

Should you have any enquiries, please contact our Engineer Mr. Terry KUNG at tel. no. 3583 4086.

Yours faithfully,



(CHAN Chung-kun)

for Director of Water Supplies

Encl.

c.c. WSD 3321/1/82] - without catalogue
ME/MC] - with soft copy only

General Acceptance No. C20210049