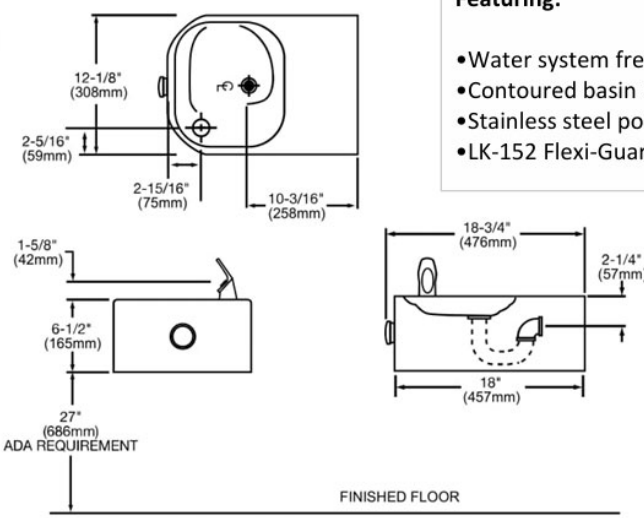




PROJECT		REF		REV	ITEM CODE	
LOCATION		DATE			PAGE	

## SANITARY WARE SPECIFICATION SHEET


<p><b>Item Descriptions</b></p> <p><b>Model</b></p> <p><b>Dimensions</b></p> <p><b>Material</b></p> <p><b>Manufacturer</b></p> <p><b>Source</b></p> <p><b>Contact Tel/Fax</b></p> <p><b>E-mail</b></p> <p><b>Website</b></p>	<p>ELKAY (USA) Stainless steel wall mount push push button drinking fountain</p> <p>EDFP214C</p> <p>L308 x W476 x H165 mm</p> <p>Stainless Steel</p> <p>ELKAY (USA)</p> <p>Ka Shing Enterprises (H.K.) Limited          Mr. Ivan Lau / Mr. Gilman Yuen          (852) 2628-0661 / (852) 2490-2700          project@kashingehk.com          www.kashingehk.com</p>	<p style="text-align: center;"><b>Illustration/ Drawing</b></p>  <p><b>Included with Product:</b> Fountain  <b>Ships in one box.</b>          A Century of Tradition and Quality. For more than 100 years, Elkay has been making innovative products and providing exceptional customer care. We take pride in offering plumbing products that make life easier, inspire change and leave the world a better place.</p> <p><b>PRODUCT COMPLIANCE</b>          ADA &amp; ICC A117.1          ASME A112.19.3/CSA B45.4          NSF/ANSI 61 (Qs1) &amp; 372 (lead free)          NSF REG4</p> 
--	---	--




FINISHED FLOOR

**Featuring:**

- Water system free of lead-containing parts
- Contoured basin minimizes splashing
- Stainless steel polished to a satin finish
- LK-152 Flexi-Guard safety bubbler approved by WSD



Origin : U.S.A.  
 產地 : 美國



Model (型號)	Length (長)	Height (高)	Depth (深)	Bubbler (噴頭)	Inlet (入水)	Drain (去水)	Ship. Wt. (重量)
EDFP-214-C	308mm (12 1/4")	165mm (6 1/2")	476mm (18 3/4")	LK-152	3/8"	1 1/4"	7.25kg (16 lbs)

**Note:**

\* All information of the above is for the reference only. No prior notice is made if any changes.



PROJECT		REF		REV	ITEM CODE	
LOCATION		DATE			PAGE	

## SANITARY WARE SPECIFICATION SHEET

### MUV-60 MUV Series Specification



Maximum Capacity 最大流量		Lamp Energy Consumption UV光管用電量	Current Flow Rate 電流	Water Inlet / Outlet 出入水口	Dimension 尺寸	Net Weight 淨重
L/s 升/秒	GPM 加侖/分鐘	Watt 瓦特	Ampere 安培	Inch 吋	mm 毫米	KG 公斤
0.06	1	8	0.15	3/8	280 (W) x 150 (D) x 360 (H) mm	7

#### Features:

##### 1. Sterilizing Chamber

- Constructed of 304 stainless steel and precision welded as a single unit.

##### 2. Ultra-violet Lamps Durability

- 9,000 hours of continuous operation.

##### 3. Safety Devices

- built-in safety shut-off solenoid valve and fail-safe deactivation system

##### 4. Additional Features Available

- BMS relay contact
- Ultra UV exposure
- Ultra flow capacity
- Flange connection
- % Intensity UV meter

#### 產品備有:

##### 1. 殺菌缸

- 以304不鏽鋼焊接為一組機身

##### 2. 紫外光管效能

- 9,000 小時連續使用

##### 3. 安全設備

- 內置安全關水閥及停電截水設備

##### 4. 可後加額外功能

- BMS 開關接線
- 高紫外光放射量設計
- 高流量設計
- 法蘭接口
- 放射量UV錶

#### Operation Conditions:

##### 1. Working Pressure

recommended not to exceed 100 p.s.i.

##### 2. Pressure Drop

ranging from 2 – 5 p.s.i. depending on model.

##### 3. Electricity Supply

220 Volts 50 Hz for standard models.

##### 4. Ultra-violet Exposure

average exceeding 30,000 microwatt sec/cm2.

#### 操作條件:

##### 1. 工作壓力

建議不可高於100 p.s.i.

##### 2. 壓力降

約2 – 5 p.s.i., 視乎個別型號。

##### 3. 電源

220 Volts 50 Hz

##### 4. 紫外光放射量

平均超過30,000 microwatt sec/cm2

Note:

\* All information of the above is for the reference only. No prior notice is made if any changes.



### History of FABRI-TECHNIC Ultraviolet Sterilizer

Fabri-Tech Engineering and Trading Co., Ltd. has started its water treatment business since 1973.

We are specializing in the manufacturing of ultra-violet sterilizers for eliminating bacteria and viruses in water and air. Ultraviolet Disinfection system is ideal for many commercial and industrial applications, it disinfects without chemicals, i.e. will not alter the properties of the disinfected material.

Over the years, we delivered our UV systems to many reputable customers in Hong Kong as well as overseas including Singapore, Dubai, Thailand, The Philippines, Vietnam, China and Macau. We design and manufacture custom-built systems, uniquely catered to your requirements, budget and schedule.

### What is Ultraviolet and How Does "Fabri-Tech" UV Sterilizer Work?

Fabri-Tech UV Sterilizers employ an efficient and cost effective technique to rid water of bacteria, mould, virus and algae. This method, involves the Ultraviolet technology, disinfects without adding any chemicals to the water. It is ideal for many domestic and industrial applications. The shortwave radiation of 2537Å, generated from a germicidal UV lamp, penetrates the microorganisms and attacks their DNA structure. The cells can no longer reproduce and rendered lifeless.

### What are the advantages of UV as disinfection system?

#### ■ Effective

All microorganisms, including chlorine-resistant species such as Cryptosporidium parvum, are susceptible to ultraviolet disinfection.

#### ■ Economical

Hundreds of gallon can be purified for minimal operating cost. Low equipment maintenance and low service costs.

#### ■ Fast

Water is ready for use as soon as it leaves the purifier.

#### ■ Automatic

Provides continuous disinfection without special attention.

#### ■ Safe

No danger of overdosing or adding of dangerous chemicals.

#### ■ Reliable

None of water's physical or chemical properties like pH, color, taste, odor or healthy mineral contents are altered.

#### ■ No residual chemicals

No corrosion problems and risk of recontamination by residual chemicals.

#### ■ Compact

Accommodate big capacity of water flow with low pressure drop.

#### ■ Easy

Simple installation and maintenance.

#### ■ Compatible

Can be easily fitted to new or existing water treatment facilities.

Ultraviolet Energy Levels at 2537 Angstrom Units Wavelength is Required for 99.9% Destruction of Various Microorganisms

UV Energy in Microwatt-seconds per Square Centimeter

Note:

\* All information of the above is for the reference only. No prior notice is made if any changes.





## EVERPURE® PBS-400

### PBS-400 DRINKING WATER SYSTEM FOR KITCHEN OR WET BAR

The same commercial quality that makes Pentair® Everpure® the overwhelming choice for water filtration in restaurants is also available for your entire home, including the kitchen and wet bar. The Pentair Everpure PBS-400 introduces great-tasting, crisp, clean filtered water at the prep sink for washing and preparing vegetables and fruits, at the potfiller for making pasta, soups and sauces, and at the wet bar for mixing drinks and making ice. The Pentair Everpure highly engineered submicron design rids water of unwanted lead and chemical impurities, and provides a fast, convenient water flow that won't slow you down.

**3000**  
gallons  
**CAPACITY**  
11,356 Litres

#### FEATURES

##### Easy installation

- Built-in water shut-off allows for easier cartridge changes

##### Great Tasting Water

- Retains vital minerals found naturally in water to ensure the health and delicious taste of your water
- Adsorbs common earthy, moldy, fishy tastes, and odors



##### Commercial Grade Filtration

- Signature metal canister delivers commercial-grade durability to protect the system from splitting or bursting
- Its food-grade polymer lining prevents water from contacting the metal

##### Added Benefits

- Helps prevent lime and scale build up in water appliances

#### SPECIFICATIONS

- **Flow rate**  
controlled at 2.2 gpm (8.3 Lpm)
- **Temperature**  
35-100° F (2-38° C)  
cold water use only
- **Pressure**  
10-125 psi (0.7-8.6 bar)  
non-shock
- **Capacity**  
3,000 gal. (11,356 L)
- **Required Space**  
5W x 20H x 5D in  
13W x 51H x 13D cm

#### SUBSTANCE REDUCTION

- Lead
- NSF/ANSI Standard 53 certified to reduce cysts such as Cryptosporidium and Giardia by mechanical means
- Chlorine taste & odor
- Dirt and cloudiness\*
- Mold and algae\*
- Reduces particles as small as 0.5 micron in size by mechanical means

\*As tested by Everpure, LLC.

EPA EST. NO. 002623-IL-002

## ORDERING INFORMATION

MODEL	PART NO	DESCRIPTION
PBS-400	EV927085	Drinking water system
PBS-400	EV927086	Cartridge



## GENERAL INSTALLATION / OPERATION / MAINTENANCE REQUIREMENTS

This drinking water system must be maintained according to the manufacturer's instructions, including replacement of filter cartridges. The substances reduced or removed by this system are not necessarily in your water. Read the performance data sheet.

It is recommended that before purchasing a water treatment unit, you have your water tested to determine your actual treatment needs.

Space required: 5W x 20H x 5D in (13W x 51H x 13D cm) including 2-1/2 inches of clear space under unit for cartridge change

Do not use with water that is microbiologically unsafe or of unknown quality without adequate disinfection before or after the system. Systems certified for cyst reduction may be used on disinfected water that may contain filterable cysts.

Install vertically with cartridge hanging down.

Use minimum length of tubing possible

Flush new cartridge at full flow for three minutes to purge air.

Replace cartridge when capacity is reached, or when flow becomes too slow. To ensure optimum water filtration, cartridges should be changed annually.

System comes complete with filter cartridge, head, fittings, and tubing.

### Health Claim Performance Certified to NSF/ANSI Standards\*

This system has been tested according to NSF/ANSI 42 and 53 for the reduction of the substances listed below. The concentration of the indicated substances in water entering the system was reduced to a concentration less than or equal to the permissible limit for water leaving the system, as specified in NSF/ANSI 42 and 53.

SUBSTANCE	INFLUENT CHALLENGE CONCENTRATION	MAX. PERMISSIBLE PRODUCT WATER CONCENTRATION	REDUCTION REQUIREMENTS	MINIMUM REDUCTION	AVERAGE REDUCTION
<b>Standard 42 – Aesthetic Effects</b>					
Chlorine	2.0 mg ± 10%	–	≥ 50%	–	98%
Particulate, Class I					
Particles 0.5 - <1 µm	at least 10,000 particles/mL	–	≥ 85%		99.8%
<b>Standard 53 – Health Effects</b>					
Cyst	Minimum 50,000/L	–	99.95%	99.99%	99.99%
Lead 6.5	0.15 mg/L ± 10%	0.010 mg/L	–	98.9%	98.9%
Lead 8.5	0.15 mg/L ± 10%	0.010 mg/L	–	94.1%	97.2%

Everpure®, Micro-Pure® and the silver canister color are registered trademarks of Pentair Filtration Solutions, LLC ©2013.

**Warranty** – Everpure Drinking Water Systems are warranted to be free of defects for a full twelve (12) months after purchase. A detailed warranty statement is provided with each system.



This system has been Tested & Certified by WQA against Standard 42 & 53 as verified and substantiated by test data for the reduction of:

**Std. No. 42 - Aesthetic effects**

*Chemical Reduction*

Taste & Odor

Chlorine

*Mechanical Filtration*

Nominal Particulate Class I

**Std. No. 53 - Health effects**

*Chemical Reduction*

Lead

*Mechanical Filtration*

Cyst



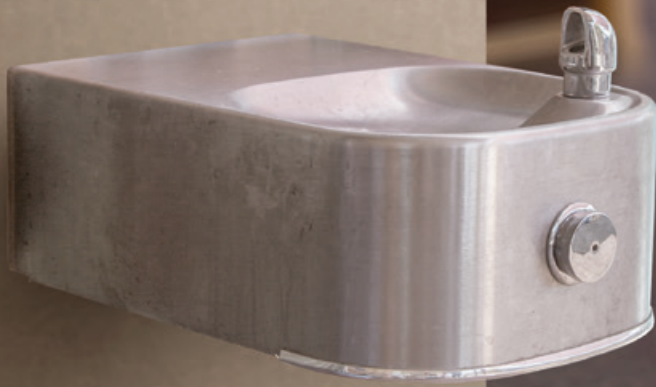
### FILTRATION & PROCESS

5730 NORTH GLEN PARK ROAD, MILWAUKEE, WI 53209

P: 262.238.4400 | F: 262.238.4404 | WWW.PENTAIRAQUA.COM | WWW.RESIDENTIAL.EVERPURE.COM | CUSTOMER CARE: 800.279.9404

All Pentair trademarks and logos are owned by Pentair, Inc. or its affiliates. All other registered and unregistered trademarks and logos are the property of their respective owners. Because we are continuously improving our products and services, Pentair reserves the right to change specifications without prior notice. Pentair is an equal opportunity employer.

310917 REV E JL14 © 2014 Pentair Residential Filtration, LLC. All Rights Reserved.



The Elkay Soft Sides® Single Wheelchair-Accessible fountain is a wall-mounted stainless steel product developed for indoor and outdoor public environments.

The fountain head features a FlexiGuard® Anti-bacterial safety nozzle which is built into a contoured basin designed to reduce splashing. The basin extends out to 47cm from the wall for easy wheelchair access, making it an ideal product for school campuses, sports centres, shopping complexes and other public-use spaces.

**Product features**

- Soft Sides® architectural drinking fountain design
- Contoured basin for a splash resistant surface
- Softly rounded corners
- Wheelchair accessible
- Up to five year warranty\*

**Technical Details**

Material and Finish	Stainless steel
Power	No electrical required
Drinking fountain style	Vandal Resistant
Mounting option	Wall-mounted
Chilling option	Non-refrigerated
Filter	Non-filtered (as standard)
Dimensions	L: 30.8cm W: 47.6cm H: 16.5cm
Shipping weight	7kgs



\*A full 5-year warranty on the compressor and hermetically sealed refrigeration systems, and 24-month parts and labour warranty on all other components

