


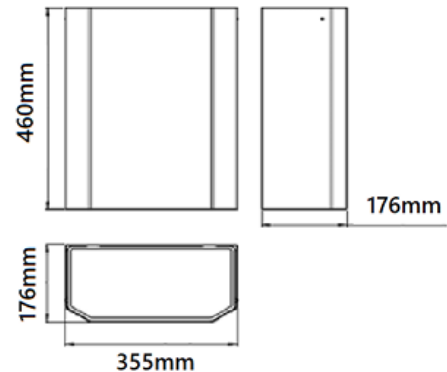


PROJECT		REF		REV	ITEM CODE	
LOCATION		DATE			PAGE	

## SANITARY WARE SPECIFICATION SHEET

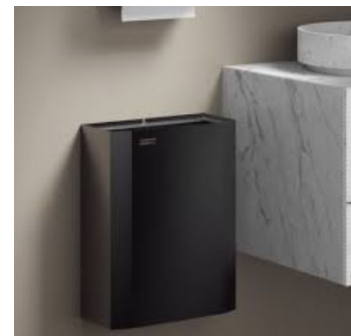
Item Descriptions	Mediclinics (Spain) Waste receptacles and bins, stainless steel AISI 304, santin finish (Capacity: 25L)	<b>Illustration/ Drawing</b> 
Dimensions	L355 x W176 x H460 mm	
Model	PPA2279CS	
Material/ Finish	Steel AISI 304 / Stain Finish	
Manufacturer	Mediclinics, S.A. (Spain)	
Source	Ka Shing Enterprises (H.K) Limited Mr. Ivan Lau / Mr. GilmanYuen	
Contact Tel/Fax E-mail Website	(852) 2628-0661 / (852) 2490-2700 project@kashingehk.com www.kashingehk.com	

<b>General Description</b> <ul style="list-style-type: none"> <li>Open waste receptacle, 25 L of capacity with inner plastic ring for bag holder. For standing on the floor or wall mounting by means of 4 slot holes drilled on the back of the appliance.</li> <li>Suitable for lavatories and in-doors public areas with medium traffic</li> <li>Model suitable for public use.</li> </ul>	
<b>Components &amp; Materials:</b> <ul style="list-style-type: none"> <li><b>PPA2279:</b> steel white Epoxy finish, 0.8 mm thick.</li> <li><b>PPA2279C:</b> stainless steel AISI 304, bright finish, 0.8 mm thick.</li> <li><b>PPA2279CS:</b> stainless steel AISI 304, satin finish, 0.8 mm thick.</li> <li><b>PPA2279B:</b> steel black Epoxy finish, 0.8 mm thick.</li> <li>Back plate 0.8 mm thick with 4 slot holes for wall mounting.</li> <li>Black PP plastic ring for bag holder.</li> </ul>	
<b>MOUNTING TEMPLATE</b> Secure the frame with mounting screws into the holes for wall mounted option.	



**Technical specifications**

Dimensions	460x355x176 mm
Capacity	25 L
Body thickness	0,8 mm
Weight (empty)	3,7 Kg



Note:



\* All information of the above is for reference only. No prior notice is made if any changes.