



PROJECT		REF		REV	ITEM CODE	
LOCATION		DATE			PAGE	

SANITARY WARE SPECIFICATION SHEET

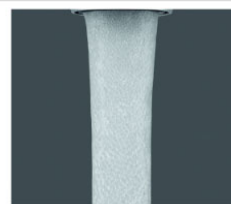
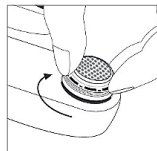
Item Descriptions	Neoperl (Germany) Water flow limiter at 3.84 l/min at 6-Bar	<p>Illustration/ Drawing</p>
Model	40.8358.010	
Size	Male M24x1	
Finish	Plastic	
Manufacturer	Neoperl	
Source	Ka Shing Enterprises (H.K) Limited Mr. Ivan Lau / Mr. GilmanYuen	
Contact Tel/Fax	(852) 2628-0661 / (852) 2490-2700	
E-mail	kashing.project@gmail.com	
Website	www.kashingehk.com	

Datasheet

SLIM Air HONEYCOMB® Aerator
STD Size M24x1



Materials used
Body: acetal
Washer: NBR (black)



aerated stream

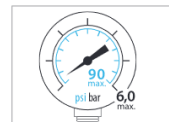
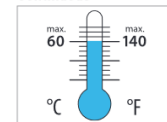
Compatibility



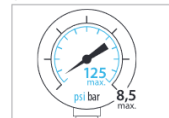
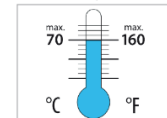
100% compatible with M24x1

Operating Conditions

Continuous



Short-term (3 minutes max.)



Indicated pressure values refer to supply line pressure.
Avoid water hammer exceeding short term conditions.

Model Overview

Flow rate	Part. No.	Wetted Surface (in mm ²)
PCA 1.0 gpm max. (@ 60psi / 38°C)	40.8358.010	4525,07
PCA 1.2 gpm max. (@ 60psi / 38°C)	40.8360.010	4525,07
PCA 5.0 l/min.	40.8351.010	4509
PCA 1.5 gpm max. (@ 60psi / 38°C)	40.8356.010	4509
PCA 7.0 l/min.	40.8355.010	4509
PCA 2.2 gpm max. (@ 60psi / 38°C)	40.8353.010	4509
PCA 8.0 l/min.	40.8354.010	4509
V [optimal performance and aeration: 0.2 - 1 bar]	40.8330.010	4022

Note:

* All information of the above is for the reference only. No prior notice is made if any changes.

sample	0.0 bar	1.0 bar	2.0 bar	3.0 bar	4.0 bar	5.0 bar	6.0 bar	7.0 bar	8.0 bar	Temp.
40.8358.010	0.00 l/min	3.73 l/min	3.80 l/min	3.79 l/min	3.84 l/min	3.81 l/min	3.69 l/min	3.49 l/min	3.23 l/min	27 °C
	0.00 l/min									0 °C
	0.00 l/min									0 °C
	0.00 l/min									0 °C
	0.00 l/min									0 °C
	0.00 l/min									0 °C
	0.00 l/min									0 °C
	0.00 l/min									0 °C
	0.00 l/min									0 °C
	0.00 l/min									0 °C
average	0.00 l/min	3.73 l/min	3.80 l/min	3.79 l/min	3.84 l/min	3.81 l/min	3.69 l/min	3.49 l/min	3.23 l/min	

