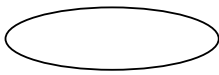



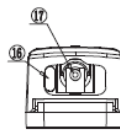
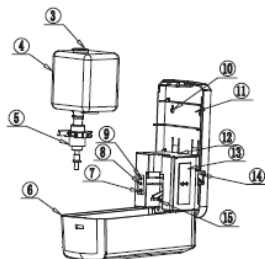
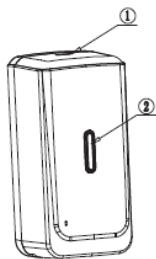


PROJECT		REF		REV	ITEM CODE	
LOCATION		DATE			PAGE	

### SANITARY WARE SPECIFICATION SHEET

Item Descriptions	Casatino (PRC) 1000ml Infra-red sensor operated soap dispenser (4pcs AA batteries)	<p>Illustration/ Drawing</p>  <table border="1" data-bbox="997 1070 1433 1326"> <thead> <tr> <th>Item</th> <th>Induction mist sterilizer</th> </tr> </thead> <tbody> <tr> <td>Induction method</td> <td>infrared reflection type</td> </tr> <tr> <td>Sensing distance</td> <td>shortest 2cm longest 8cm</td> </tr> <tr> <td>Material</td> <td>ABS</td> </tr> <tr> <td>Capacity</td> <td>1000ml</td> </tr> <tr> <td>Applicable liquid</td> <td>Special disinfectant liquid</td> </tr> <tr> <td>Discharge method</td> <td>mist</td> </tr> <tr> <td>Liquid output</td> <td>First gear: 0.52ml second gear: 1.05ml</td> </tr> <tr> <td>Battery</td> <td>Four number 2 alkaline batteries</td> </tr> <tr> <td>Power adapter</td> <td>Input voltage: AC100-240V 50/60HZ Output voltage: DC60V 1A</td> </tr> </tbody> </table>	Item	Induction mist sterilizer	Induction method	infrared reflection type	Sensing distance	shortest 2cm longest 8cm	Material	ABS	Capacity	1000ml	Applicable liquid	Special disinfectant liquid	Discharge method	mist	Liquid output	First gear: 0.52ml second gear: 1.05ml	Battery	Four number 2 alkaline batteries	Power adapter	Input voltage: AC100-240V 50/60HZ Output voltage: DC60V 1A
Item	Induction mist sterilizer																					
Induction method	infrared reflection type																					
Sensing distance	shortest 2cm longest 8cm																					
Material	ABS																					
Capacity	1000ml																					
Applicable liquid	Special disinfectant liquid																					
Discharge method	mist																					
Liquid output	First gear: 0.52ml second gear: 1.05ml																					
Battery	Four number 2 alkaline batteries																					
Power adapter	Input voltage: AC100-240V 50/60HZ Output voltage: DC60V 1A																					
Dimensions	L111 x W126 x H246 mm																					
Model	KSE0801.400 (Liquid) KSE0802.400 (Foam) KSE0803.400 (Spray)																					
Finish	Plastic																					
Manufacturer	CASATINO (PRC)																					
Source	Ka Shing Enterprises (H.K) Limited Mr. Ivan Lau / Mr. GilmanYuen																					
Contact Tel/Fax	(852) 2628-0661 / (852) 2490-2700																					
E-mail	project@kashingehk.com																					
Website	www.kashingehk.com																					

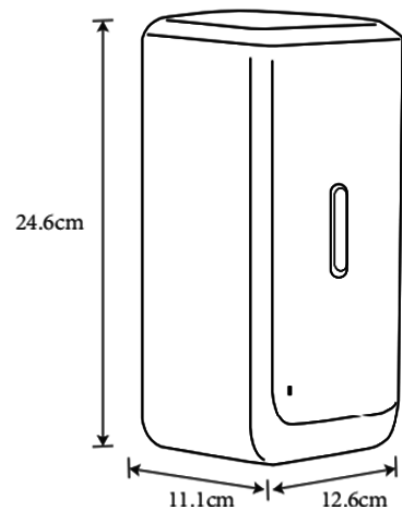
### Part description



- |                        |                              |                     |
|------------------------|------------------------------|---------------------|
| 1. Press hole position | 8. Double discharge button   | 14.ON/OFF switch    |
| 2. Visual window       | 9. One-time discharge button | 15. Squeeze slip    |
| 3. Kettle cover        | 10. Screw mounting hole      | 16. Induction light |
| 4. Kettle              | 11. Bottom plate             | 17. Liquid outlet   |
| 5. Pump head           | 12. Movement                 |                     |
| 6. Cover               | 13. Battery cover            |                     |
| 7.LED indicator        |                              |                     |



this key in the accessory bag



Note: Batteries are not included.

\* All information of the above is for the reference only. No prior notice is made if any changes.



PROJECT		REF		REV	ITEM CODE	
LOCATION		DATE			PAGE	

## SANITARY WARE SPECIFICATION SHEET

### Product specification

If you choose the drip function (drip model), please refer to the following instructions

Item	Induction dripping soap dispenser
Induction method	infrared reflection type
Sensing distance	shortest 2cm longest 8cm
Material	ABS
Capacity	1000ml
Applicable liquid	liquid concentration is $\leq 1000$ Mpa. s
Discharge method	drip solution
Liquid output	First gear: 1.4ml second gear: 3ml
Battery	Four number 2 alkaline batteries
Power adapter	Input voltage: AC100-240V 50/60Hz Output voltage: DC60V 1A

If you choose the foam function (foam model), please refer to the following instructions

Item	Induction foam soap dispenser
Induction method	infrared reflection type
Sensing distance	shortest 2cm longest 8cm
Material	ABS
Capacity	1000ml
Applicable liquid	Foam special liquid (water liquid)
Discharge method	foam
Liquid output	First gear: 0.4ml second gear: 0.9ml
Battery	Four number 2 alkaline batteries
Power adapter	Input voltage: AC100-240V 50/60Hz Output voltage: DC60V 1A

If you are using the mist function (mist model), please refer to the following instructions

Item	Induction mist sterilizer
Induction method	infrared reflection type
Sensing distance	shortest 2cm longest 8cm
Material	ABS
Capacity	1000ml
Applicable liquid	Special disinfectant liquid
Discharge method	mist
Liquid output	First gear: 0.52ml second gear: 1.05ml
Battery	Four number 2 alkaline batteries
Power adapter	Input voltage: AC100-240V 50/60Hz Output voltage: DC60V 1A

### liquid

When the motor rotates but no liquid flows out during induction, please check whether the bottle is empty and add liquid to ensure that the machine can be used normally. When the machine works without liquid for a long time, the machine will be damaged

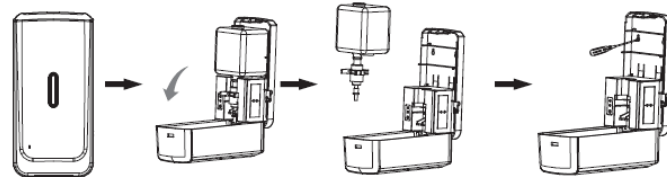
· Drip machine (liquid) suitable for emulsion liquid, concentration  $\leq 1000$  mPa.s

· Foam machine (foam) Suitable for foam special (water) liquid:

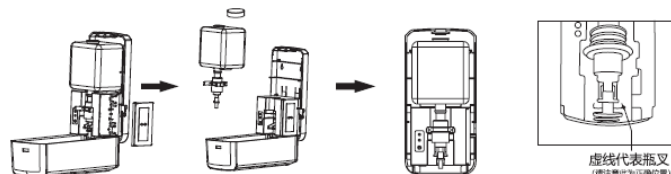
· Disinfection machine (spray) suitable for special disinfection liquid (or medical disinfection alcohol, 5% alcohol)

### Installation instructions

When installing, keep the space below the machine at least 10CM. Hang the machine in a proper position, do not make the machine damp, contact with water



(Figure A-1) (Figure A-2) (Figure A-3) (Figure A-4)



(Figure A-5) (Figure A-6) (Figure A-7) (Figure A-8)

Insert the accessory key into the corresponding hole (Figure A-1)

Push the key down to open the cover (Figure A-2)

After open the cover, take out the inner bottle (Figure A-3)

Fasten the screws on the wall according to the screw holes on the back of the machine, and hang the machine (Figure A-4).

Open the battery box cover and correctly install the four No.2 alkaline batteries (Figure A-5).

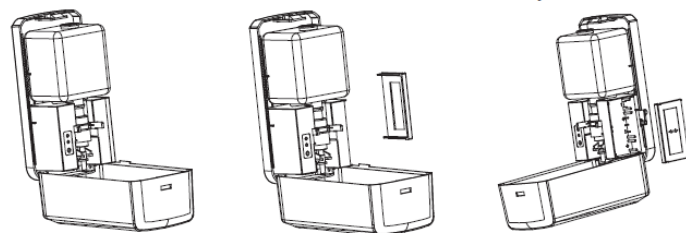
Must remove the bottle then add liquid (Figure A-6)

Then put the bottle load vertically and parallel into the machine (Figure A-7)

Pump head fork must be stuck in the correct position (Figure A-8)

### Battery Installation

Open the face cover, then open the battery box cover, and correctly install 4 batteries of No. 2 alkaline batteries in the battery box.



① Open the cover ② Remove the battery box cover ③ Install the battery and cover the battery box

Note: Batteries are not included.

\* All information of the above is for the reference only. No prior notice is made if any changes.